

OPERATIONS AND MAINTENANCE MANUAL  
FOR  
THE VPDES GENERAL PERMIT FOR CHANEY ENTERPRISES, LP  
LORTON RMC FACILITY  
9520 GUNSTON COVE, RD  
LORTON, VIRGINIA 22079  
1/7/2019

## TABLE OF CONTENTS

- 1. Introduction**
  - a. Site Overview*
  - b. Emergency Phone Numbers*
- 2. Description of Potential Discharges and Treatment Facility**
- 3. Maintenance**
  - a. Routine Maintenance Schedules*
  - b. Best Management Practices (BMP's)*
- 4. Spill Management Procedures**
  - a. Spill Containment/Storage*
  - b. Material Handling/Storage*
- 5. Effluent Monitoring Requirements**
  - a. Authorized Samplers*
  - b. Sampling Procedure*
- 6. Personnel**
- 7. Records**
- 8. SWCB Permits and/or Certificates**
- 9. Closure Plan**
- 10. Corporate Certification**

**Appendix:**

**Appendix A: Location Map**

**Appendix B: Material Inventory**

**Appendix C: Daily pH Treatment System Inspection Log**

**Appendix D: Discharge Monitoring Report Form**

## 1. Introduction

### a. Site Overview:

The Lorton Ready-Mix Concrete Facility is located at 9520 Gunston Cove Rd, Lorton, VA 220179. The site is situated in an industrial area between Interstate 95 and the CSX rail line. The facility produces ready-mix concrete and stores sand and gravel for use in the ready-mix concrete batching operations. The site contains a four (4) tier settling basin, fuel and water storage tanks, aggregate and sand bins, a batch office, a storage garage, and a storm water retention pond.

### b. Emergency Contacts:

Business Office Location: 2410 Evergreen Rd., Suite 201  
Gambrills, MD 21054

#### Primary Emergency Contact

Name: Chris McCoy  
Title: Safety Director  
Cell: (240) 299-7172  
Email: cmccoy@chaneyenterprises.com

#### Secondary Contact

Name: Fernando Rodriguez  
Title: Concrete Ops. VA Regional Manager  
Cell: (240) 419-0616  
Email: [frodriguez@chaneyenterprises.com](mailto:frodriguez@chaneyenterprises.com)

State Agency: Virginia Dept. of Environmental Quality  
(804) 698-4000  
Specific Contact: Rebecca Vice  
Title: Compliance Auditor  
Office Number: 1-800-332-6542  
Cell/Direct: (703) 583-3922

Federal Agency: National Response Center  
(800) 424-8802

Medical: Inova HealthPlex - Lorton  
(703) 982-8400

Sheriff: Fairfax County Sheriff's Office  
(703) 246-2328

## 2. Description of Potential Discharges and Treatment Facilities

From the process of batching concrete, washing truck exteriors and drums, dust suppression, and watering aggregates, a waste consisting of small amounts of solids (mud, sand, clay, and gravel) and chemicals used in batching concrete is generated. Saddle tanks on the mixers are filled with potable water used to wash down the truck exterior and chute before leaving the site and add to the drum as needed. Flow is provided by a garden style hose attached to the mixer's saddle tank. Additional flow is provided by a pump located in the final settling basin connected to a pipe stand used to washout mixer drums after they return from a job-site.

Process and storm water are directed to a four (4) tier settling basin via grading, curbing, and a trench drain. Collected waters will then flow through the four (4) tier settling basin large enough to hold water long enough for sediments to drop out. The fourth and final basin is where pH is treated with the use of a Fortrans Model 5000C Water Treatment System. This unit uses carbon dioxide to maintain compliant pH levels. After leaving the settling basins, a 24" underground culvert directs treated water to a dry storm water retention pond. Discharge Point 1 (DP 1) originates from a 21" underground culvert fed by the pond that connects to a municipal 21" underground culvert. Monitoring occurs in the dry pond at the origin of the 21" underground culvert. See **Appendix A** for a diagram of the site and location of the Discharge Point.

## 3. Maintenance

### a. Routine Maintenance schedules:

Settling basins are inspected daily for sediment accumulation. A loader is used to clean out the settling basins when they are approximately half full of sediments or before known storm events. Trench drains and curbs are also inspected daily and cleaned out as needed. The dry pond is inspected weekly and cleaned out annually or as needed. There is a dumpster on-site, provided by Waste Management, that is emptied weekly.

### b. Material Handling/Storage

All chemicals kept on-site are stored in the garage. Chemicals will be stored in properly sealed and labeled containers. All containers will be kept under cover, away from site traffic, and out of contact with storm or process waters.

See **Appendix B** for Material Inventory for all chemicals stored on-site.

#### 4. Spill Management Procedures

##### a. *Spill Containment/Storage*

All spills, including spills from fuel, oil, coolant, transmission/hydric fluid, truck wash, add mixtures, or concrete are cleaned up as soon as they are noticed with dry methods and disposed of such that no discharge to state waters except as authorized by VAG110359 occurs. In the event of a spill we use ACE Environmental Services, LLC or a similar certified environmental cleanup specialist to remove all contaminated material to be disposed of properly off-site. No contaminated materials will be stored on-site.

##### b. *Material Handling/Storage*

All truck wash and add mixtures are stored in sealed and properly labeled containers in the garage and/or sea container. Fuel is stored in a double walled fuel tank located adjacent to the garage and all other vehicle fluids, oil, coolant and transmission fluid/hydric fluids, are also stored in the garage.

#### 5. Effluent Monitoring Requirements

##### a. *Authorized Samplers*

Victor Vilece	Assistant Project Manager/Land	301-861-6094
---------------	--------------------------------	--------------

##### b. *Sampling Procedure*

Discharge samples will be collected by Chaney's Authorized Samplers (listed above). They will collect pH samples and analyze within 15 minutes on site. Other samples collected for TSS are collected, preserved, and analyzed in accordance with the Code of Federal Regulations (CFR) 40 CFR Part 136 or Alternative methods. Samples will be taken, by Chaney Staff, to Environmental Testing Labs, Inc for analysis.

Samples are collected a minimum of once every three months. Samples shall be collected by March 31, June 30, September 30, and December 31 of each year and reported on the facility's Discharge Monitoring Report (**Appendix D**) and submitted to DEQ at the Northern Regional Office 13901 Crown Court, Woodbridge, VA 22193. DMRs shall be submitted by January 10, April 10, July 10, and October 10 of each year. A minimum of one grab sample shall be taken resulting from a storm event that results in an actual discharge from the site. Flow is estimated as gallons per day. If no discharges occur in the three-month period, the DMR will have "No Discharge" written upon it.

## 6. Personnel

All reports shall be signed and dated by a signatory authority per Part III K 2 of the permit. The following indicates the authorities of plant personnel:

Kyle Murray – Project Manager and permit holder. Has direct contact to DEQ, signs DMR.

Victor Vilece – Environmental Project Manager – develops operations and maintenance (O&M) manual with input from operator. Reviews O&M annually with input from operator. Has direct contact to DEQ, monitoring coordinator (contact lab, conducts sampling), fills out DMR.

Chris McFarland – Plant Manager – direct contact to DEQ. Notifies Assistant Project Manager if O&M manual needs to be revised, conducts sampling during storm events, enforces BMPs at plant site.

## 7. Records

All records for facility maintenance, inspections, and sampling and testing, shall be maintained for a minimum of three years and shall be available for inspection by the owner, manager, and DEQ upon request.

## 8. SWCB Permits or Certificates

A copy of VPDES Permit #VAG110359 can be found in the Environmental Documents Binder in the batch office.

## 9. Closure Plan

### *a. Treatment and removal of wastewater, storm water, and solids.*

All wastewater and storm water will be treated before being discharged from the site. All discharge will occur through outfall 001 as shown in **Appendix A**. Water that cannot be treated to compliance with the VPDES regulations will be removed from the site by a contractor and disposed of at a proper facility. Hardened residual concrete materials will be shipped off site to the Waldorf Plant for crushing and sale.

### *b. Fate of structures.*

At the end of the operations all structures will be removed from the site.

- c. *Removal plan for all exposed industrial materials.*

All exposed industrial materials will be stored and recycled at the appropriate recycling facility.

- d. *Description of the stabilization of land in which exposed industrial materials were stored or placed.*

No exposed industrial materials will be stored on site.

#### 10. Corporate Certification

"I certify under penalty of law that this document and all attachments were prepared under my direction or supervision in accordance with a system designed to assure that qualified personnel gathered and evaluated the information submitted. Based on my inquiry of the person or persons who manage the system, or those persons directly responsible for gathering the information, the information submitted is, to the best of my knowledge and belief, true, accurate, and complete. I am aware that there are significant penalties for submitting false information, including the possibility of fine and imprisonment for knowing violations."

Victor Vilece

Name

4/30/19

Date

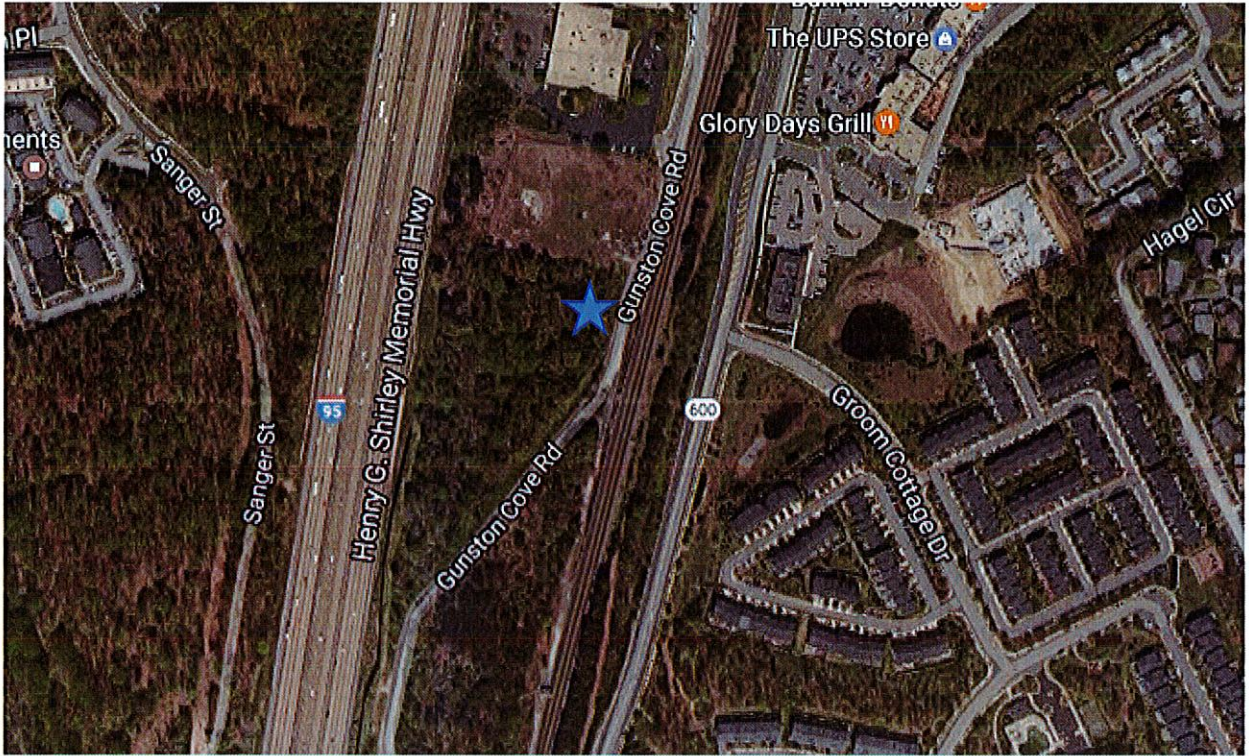
Environmental Project Manager

Title

  
Signature



**Appendix A**  
**Location Map**



 = Discharge Point 001

**Appendix B**  
**Material Safety Data Sheets**

TRADE NAME MATERIAL	PHYSICAL DESCRIPTION	STORM WATER POLLUTANTS
<i>Sand, Gravel</i>	Solid particles	Silicon, suspended solids, turbidity, sediment
<i>Hydraulic oil/fluids</i>	Brown oily petroleum hydrocarbon	Mineral oil
<i>Gasoline</i>	Colorless, pale brown or pink petroleum hydrocarbon	Benzene, ethyl benzene, toluene, xylene, MTBE
<i>Diesel Fuel</i>	Clear, blue-green to yellow liquid	Petroleum distillate, oil & grease, naphthalene, xylenes
<i>Antifreeze/coolant</i>	Clear green/yellow liquid	Ethylene glycol, propylene glycol, heavy metals (copper, lead, zinc)

All Material Safety Data Sheets can be found at [www.chaneyenterprises.com](http://www.chaneyenterprises.com)



## Appendix D Discharge Monitoring Report Form

**PLUMBING FACILITY**

Location: Ready Mix Concrete Plant  
 PO Box 2000, Centerville MD 21034  
 Permit Number: VA0110008

No Discharge:

**COMMONWEALTH OF VIRGINIA  
 DEPARTMENT OF ENVIRONMENTAL QUALITY  
 CONCRETE PRODUCTS FACILITIES  
 DISCHARGE MONITORING REPORT (DMR)**

MONITORING PERIOD						
FROM		YEAR	MO	DAY	TO	

**RETURN TO:**

Department of Environmental Quality  
 Northern Regional Office  
 13001 Dawson Road, Woodbridge VA 22194  
 (703) 583-3500

NOTE: READ PERMIT AND GENERAL INSTRUCTIONS BEFORE COMPLETING THIS FORM AND RETURNING IT.

Outfall Num: 001

Reporting Frequency: Quarter

Run Date: Mar 17, 2017

PARAMETER		QUANTITY OR LOADING			QUALITY OR CONCENTRATION				NO. I.A.	FREQUENCY OF ANALYSIS	SAMPLE TYPE
		AVERAGE	MAXIMUM	UNITS	MINIMUM	AVERAGE	MAXIMUM	UNITS			
001 FLOW	REPORTED										
	RECEIVED	NL	NL	MGD					0	1/QM	EST
002 pH	REPORTED										
	RECEIVED				PH		9.0		0	1/QM	CHEM
004 TSS	REPORTED										
	RECEIVED					30	60	MSL	0	1/QM	GRAV

Additional Permit Requirements (Outfall 001):

Comments:

I CERTIFY UNDER PENALTY OF LAW THAT THIS DOCUMENT AND ALL ATTACHMENTS WERE PREPARED UNDER MY DIRECTION OR SUPERVISION IN ACCORDANCE WITH A SYSTEM DESIGNED TO ASSURE THAT QUALIFIED PERSONNEL PROPERLY GATHER AND EVALUATE THE INFORMATION SUBMITTED. BASED ON MY INQUIRY OF THE PERSON OR PERSONS WHO MANAGE THE SYSTEM OR THOSE PERSONS DIRECTLY RESPONSIBLE FOR GATHERING THE INFORMATION, THE INFORMATION SUBMITTED IS TO THE BEST OF MY KNOWLEDGE AND BELIEF TRUE, ACCURATE AND COMPLETE. I AM AWARE THAT THERE ARE SIGNIFICANT PENALTIES FOR SUBMITTING FALSE INFORMATION, INCLUDING THE POSSIBILITY OF FINE AND IMPRISONMENT FOR KNOWING VIOLATIONS.

BYPASS AND OVERFLOWS		
TOTAL OCCURRENCES	TOTAL FLOW(MG)	TOTAL BOBAC(KG)

OPERATOR IN RESPONSIBLE CHARGE			DATE		
TYPED OR PRINTED NAME	SIGNATURE	CERTIFICATE NO.	YEAR	MO.	DAY
PRINCIPAL EXECUTIVE OFFICER OR AUTHORIZED REPRESENTATIVE			DATE		
TYPED OR PRINTED NAME	SIGNATURE		YEAR	MO.	DAY